

Valley Hospice Foundation

AGM June 10 2009

Annual Report 2008-2009

Proposed Slate of Directors

2009/2010

Chair

Diana Patterson

Past Chair

JRC Perkin

Vice Chair

Wayne Woodman

Treasurer

Jim Noonan

Directors

David Acton

Jeanette Auger

Robert Harrison

Brenda Wallace-Allen

Don Wells

Valley Hospice Foundation

23 Earnscliffe Avenue

Wolfville, NS B4P 1X4

902.542.2265

www.valleyhospice.ca

Report from the Chair

In so many ways the world of a life limiting illness is a world apart. It can be darkened by struggle and pain, and can be brightened by moments of joy and comfort.

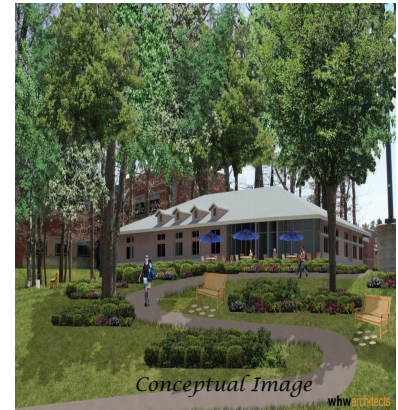
Over ten years ago, members of our community dared to dream that it would be possible to have a place where dying people and their families would not be alone in dark times – that there would be a place that could bring moments of light during life's most difficult journey.

Over the years, the Valley Hospice Foundation is fortunate to have created invaluable community partnerships. With the shared visions and the strengths of these partnerships, we see clearly the light at the end of the tunnel.

Our collaboration with Annapolis Valley Health continues through the work of the Hospice Options Working Group. The Hospice will be a key addition to the district's palliative care program that cares for patients throughout the Valley.

Within the Annual Report of 2008, the first phase (or quiet phase) of a joint Capital Campaign - *Our Community, Our Health* was announced. This joint fundraising effort is designed to address the funding of redevelopment projects at Valley Regional Hospital and to raise the funds needed to build the Hospice. The initial phase has been important in establishing the groundwork for success. The results achieved during the "quiet" phase will have a very public impact. While it is true that we have not launched the Campaign, it is important to note that we are well into the middle of it. A number of funding partners have been formed and the momentum of the past year continues to build. Our next goals are to broaden the scope of the volunteer fundraising committees, and to announce the success to the public during a launch in the coming year.

I wish to say a fond farewell to retiring director - Jim Stegen VC, Operations. Jim has served as a director for several years. During that time he has produced a Board Manual, amended the by laws and developed and introduced the Hospice Foundation's Membership Program. The program is a key element to the community based work of advocacy, volunteerism and fundraising for the organization. Jim has given freely to the Hospice movement both as a director and within the community, especially through his work with Rotary.



Diana Patterson—Chair

It has been an exciting and productive year for the *Our Community, Our Health Capital Campaign*. As of March 31, 2009, \$2.3 million of the entire \$8 million goal has been committed. We have been able to reach this milestone with the support of:

- Valley Credit Union
- The Kings Mutual Insurance Company
- Kentville & Wolfville Rotary Clubs
- EKM Foundation, WKM Foundation & Annapolis Foundation
- Other generous organizations, corporations, individuals and Health Auxiliaries throughout the Valley.

As part of our strategy to raise \$8 million to fund redevelopment at Valley Regional Hospital and to build, equip and furnish the first stand alone Hospice in Nova Scotia, business leaders and volunteers associated with the Campaign have been making presentations and requesting support from municipal units throughout the Valley. From Hantsport to Annapolis Royal, Councils are being asked to consider a request to support this Campaign. The responses so far from all involved have been welcoming and encouraging.

Raising these funds has been a truly collaborative effort, and we would not be able to proceed without the generous support of Foundations and Auxiliaries throughout the Annapolis Valley Health District. Along with support from Board members, physicians and staff we are sending a clear message to the Valley communities that we must all work together for quality healthcare for all of us.

Our Community, Our Health Capital Campaign continues to raise money to fund these vital priorities for our region.

Wayne Woodman

<u>Balance Sheet</u>		<u>Revenue</u>			
Assets		Donations	99,455		
Cash	\$ 39,053	Fundraising	370		
Acct Rec.	485	Interest	<u>6,282</u>		
Investments	139,977		106,107		
Our Community/Our Health			=====		
Capital	468,568	Expenses		Current Year Surplus	67,835
Project Cost	<u>11,089</u>	Audit	940	Excess of Rev over Exp	
	\$659,172	Bank Charges	302	Capital Campaign	<u>181,029</u>
	=====	Dues and fees	27		248,864
Liabilities		Meeting Expenses	530	Surplus,	
Payables & Accruals	78	Office Expenses	1,995	Beginning of Year	<u>410,230</u>
Surplus		Parking	180		
Surplus	<u>659,094</u>	Publicity	480	Surplus, End of Year	659,094
	\$659,172	Telephone	420		=====
	=====	Wages	<u>33,392</u>		
			<u>38,272</u>		